

LINSPLAN
DRAWING SHEET TEMPLATE

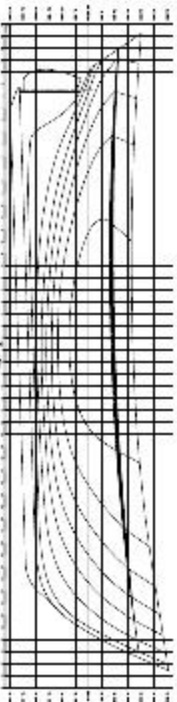


FIGURE 1

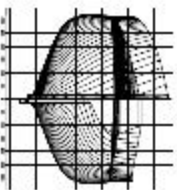


FIGURE 2

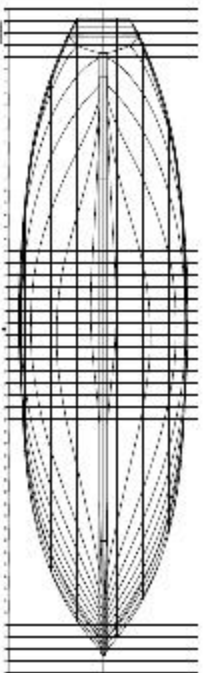


FIGURE 3

TECHNICAL SPECIFICATIONS

| PARAMETER | VALUE | UNIT |
|----------------------|--------|------------------|
| TYPE | CONVEX | |
| Diameter | 50 | mm |
| Thickness | 10 | mm |
| Material | PMMA | |
| Index of Refraction | 1.49 | |
| Focal Length | 100 | mm |
| Surface Curvature | 0.01 | mm ⁻¹ |
| Wave Length | 633 | nm |
| Wavelength Bandwidth | ± 20 | nm |
| Surface Quality | 10-0 | |
| Surface Finish | 10-0 | |
| Surface Treatment | None | |
| Coating | None | |
| Temperature | 25 | °C |
| Humidity | 50 | % |
| Pressure | 1013 | hPa |
| Light Intensity | 10 | W/m ² |
| Power Density | 10 | W/m ² |
| Beam Diameter | 5 | mm |
| Beam Waist | 5 | mm |
| Beam Waist Position | 50 | mm |
| Beam Waist Radius | 2.5 | mm |
| Beam Waist Length | 10 | mm |
| Beam Waist Diameter | 5 | mm |
| Beam Waist Area | 19.6 | mm ² |
| Beam Waist Volume | 196 | mm ³ |



OSKARTSBERG TECHNOLOGIES
SÄLTFÖRBERGSTRÅK 114

KAATA KÄRNE DESIGN
KÄRNE DESIGN & ENGINEERING
KÄRNE DESIGN & ENGINEERING

Address: KÄRNE DESIGN & ENGINEERING
KÄRNE DESIGN & ENGINEERING
KÄRNE DESIGN & ENGINEERING

Contact: KÄRNE DESIGN & ENGINEERING
KÄRNE DESIGN & ENGINEERING
KÄRNE DESIGN & ENGINEERING